



American Modular Systems

September 4, 2018

Corning Union High School District
643 Blackburn Ave
Corning, CA 96021

Re: DSA Approved Classrooms
Corning Union High School

Attn: Mr. Jared Caylor
Superintendent

American Modular Systems is pleased to provide our proposal for the various DSA Classroom Buildings. Our pricing is based upon the AMS conceptual floor plans dated 01/02/18 attached to this proposal for reference.

Corning Union High School District is utilizing the provisions of the Santa Rita Union School District Facility Services Contract and the scope of work as listed below, and in the Inclusions and Exclusions as outlined. The omission of any item(s) not listed in the assumed scope shall not be construed to be included in this pricing.

Base Building(s): DSA approved modular classroom buildings, steel rigid frame construction, Type V non-rated construction, 20 lb roof load, 50+15 lb floor load all buildings, 110 ULT wind load, 2016 CBC, Ss = 0.639, FOB Corning, CA.

(1) each; 120x32 DSA Approved classroom wing	3840 sf	\$ 682,400
(1) each; 60x32 DSA Approved classroom wing	1920 sf	\$ 341,200
(1) each; 50x32 DSA Approved Special Education building	1600 sf	\$ 364,960
Crane Charge (up to 120 Ton Crane)		\$ 13,760
DSA Site Specific Plan Preparation/Pre-Construction Services		\$ 26,880
DSA Design and Engineering Fees		\$ 25,500
Total	7360 sf	\$1,454,700

Per conceptual AMS floor plans dated 01/02/18 attached and refer to inclusions/exclusions list attached

Terms:

Monthly progress payment net 20 days. Quote good for 60 days. Design fees due at DSA submittal.

Proposal Schedule:

Signed Proposal	September 18, 2018
DSA Approval	December 2018
Purchase Order	October 19, 2018
Colors	November 1, 2018
Delivery/Set	May 2019
Completion	August 2019

Attachments/Exhibits:

AMS conceptual floor plan dated 01/02/2018

Thank you for the opportunity to provide our proposal. If accepted, please sign below accepting the standard terms and conditions of our Cooperative Purchasing Contract, and per the descriptions and pricing listed above.

Accepted By:

Entity

Signature

Printed Name

Title

Date

DMS/jt

American Modular Systems, Inc.

Signature

DANIEL M. SARICH

Printed Name

PRESIDENT

Title

9/4/18

Date

Inclusions:

Building Envelope:

- 2016 CBC
- Engineering & Design
- Standard delivery/Set-up
- Steel moment frame DSA PC design
- 22 ga standing seam, color metal roof from AMS standard color chart, standard 2.5:12 steep pitch dual slope
- 5" concrete floor system over metal deck
- 2"x4" wall framing
- PC based concrete foundation design only with 12" footings and 18" crawl space**
- Foundation flashing (6" below finished floor)
- Crane charges (120 ton)
- R-30 roof insulation, R-13 walls
- Tempered, dual glazed, bronze anodized non-operable 6'-0x4'-0 aluminum framed windows as shown

Exterior:

- 18 ga exterior hollow metal door
- Welded door frames
- Factory applied Hybrid Stucco Exterior – vertical surfaces only
- 2"x3" downspouts
- AMS Standard Dunn Edwards paint
- Allowance for custom 2 color option
- 5 ft. front overhangs, 2 ft. rear overhangs, no side overhangs
- Enclosed soffits

Interior:

- 8' 6" to 10' vaulted T-bar ceilings with Armstrong 2'x4' lay-in mineral board ceiling tiles in classrooms
- Allowance for (2) 8'x4' white markerboards per classroom
- AMS standard vinyl tack board interior wall covering over 1/2" gypboard, full close-ups
- AMS standard white FRP in Kitchen Area of Special Ed Classroom
- Casework in Kitchen Area of Special Ed Classroom only
- AMS upgrade Patcraft 2'x2' carpet tiles with rubber base
- AMS standard sheet vinyl flooring in Kitchen Area with rubber base
- AMS standard Walk-off mat at entry
- Interior doors shall be solid core veneer wood with clear birch finish, hollow metal knock down frames

Lighting, Electrical, Data:

- LED Interior lighting
- Occupancy sensors
- (1) AMS standard exterior light at each door (allowance up to 3 additional), switched photo cell controlled
- Single phase interior wall electrical panel stubbed to outside
- All low voltage conduits in wall only stubbed to above ceiling, locations to be provided by AOR

Additional Features/Items:

- Semi-recessed fire extinguisher cabinets
- AMS standard Schlage cylinder exterior door hardware
- AMS standard copper creek interior door hardware
- Von Duprin L99 panic hardware where required by code
- Hot water to kitchen sink
- Project/contract supervision
- One year warranty
- Sales tax

Mechanical:

- Wall mount gas HVAC system, single phase
- Programmable T-Stats
- Standard ducted supply registers
- Exhaust fans in Restrooms
- AMS-spec ductless hood in Kitchen
- Power/Water rough-in only for Refrigerator
- Power rough-in only for Range
- Power/Water rough-in for Washer/Dryer
- Power/Water rough-in for Dishwasher

Restrooms:

- Painted gypsum ceiling
- FRP walls
- Solid plastic partitions
- LED lighting
- AMS standard 6" Self-coved sheet vinyl flooring
- Wall hung fixtures
- Manual flush valves
- Exhaust fans
- AMS standard grab bars, mirror, and ADA toilet paper dispenser
- All fixtures to be AMS spec

Exclusions:

General Specification, Fees, and Site Requirements:

- DSA approval, DSA plan fees, DSA inspection fees, DSA Inplant/site inspection fees
- HCD fees, site inspections/approvals
- Architect fees
- Union Labor
- Builders Risk Insurance
- Site security to include the delivered buildings
- Airport proximity STC compliance
- Extreme climate zone HVAC coordination
- Solar option design/approval

Foundation, Foundation Prep:

- Concrete foundations, vent/access wells, drywells, foundation pit excavation, off-haul of spoils
- Surveying, site preparation/site improvements
- Plans showing grades, benchmarks, maintenance of benchmarks, setbacks, finish floor heights, etc.
- Adequate all weather vehicle/trades access to building pad
- Soils testing, soils reports
- Special handling due to inaccessible site conditions

Equipment and Devices:

- Fire alarm system
- Ramp transitions to grade
- Fire sprinklers/risers
- Exterior/Interior drinking fountain
- Refrigerator
- Dishwasher
- Range
- Washer and dryer
- Garbage disposal
- Door close-off at dryer alcove

Electrical and Data:

- EMS systems, EMCS systems pathways and/or coordination
- Load monitoring provisions
- Low voltage systems, motion detectors, intrusion/security systems, cameras, keypads
- IDF cabinets, wires, devices or pathways, pull strings
- ALL Signage
- Projection screens, projectors, TV/monitor brackets, CCTV

Site, Final Connection, Drainage and Plumbing:

- Full time supervision
- Temporary power/water/phone, job trailer, fencing, internet
- Dust control, project debris bin
- SWPPP
- Security, portable toilets, dumpster, storage
- Sidewalks, flatwork, curbs, mow strips, landscaping
- Utilities/connections
- RWL connections to underground

Miscellaneous:

- Sealing/waxing of finish floor coverings
- Epoxy grouts, grout sealers
- Window coverings, security screens, window/building awnings, side overhangs
- Appliances, furniture, soap/paper dispensers, hand dryers, changing tables, feminine hygiene dispensers
- Master keying
- Rated walls
- Air balance reports/testing
- Water chlorination

Special Notes:

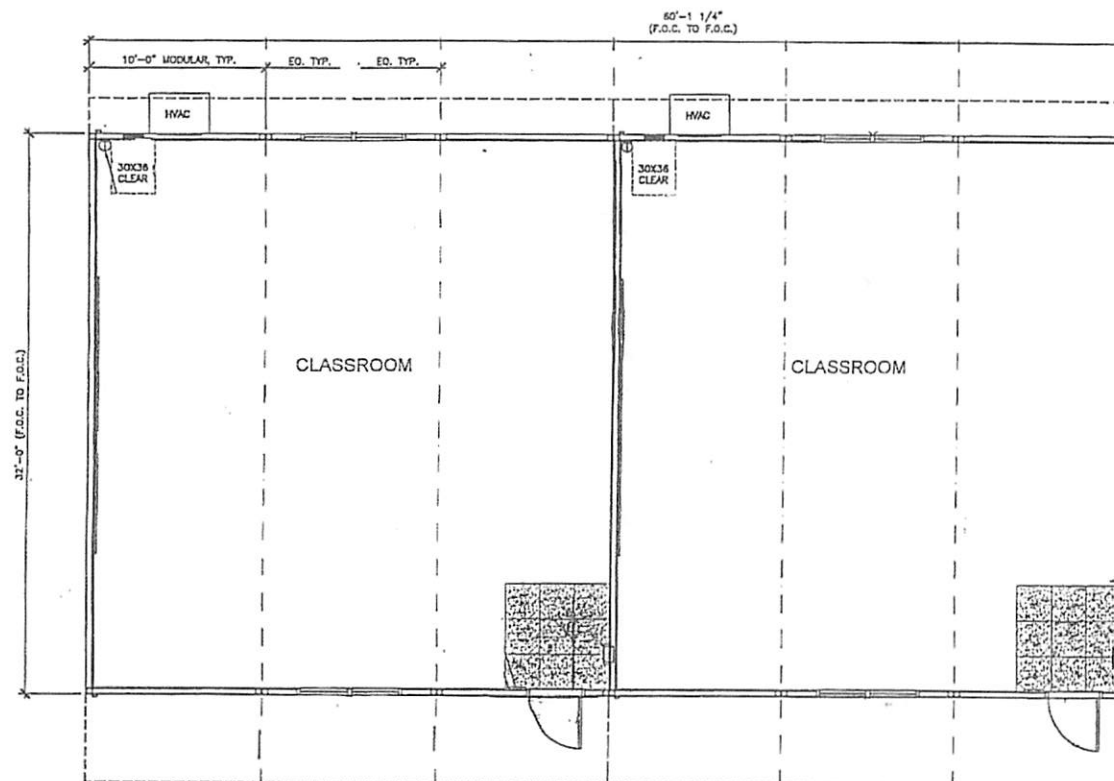
**** Concrete foundation design and engineering by AMS, installation by others. AMS is not responsible for quality of installation, inspections, nor acceptance of foundation. Any review performed by AMS shall be considered a courtesy to assist with the overall project success and does not remove the contractor's responsibility to comply with plans and specifications. Contractor performing foundation installations is responsible to ensure foundation is completed per plans, specifications, and meets tolerances for modular buildings as described in AMS drawings. In the event engineering is required to accommodate errors or omissions, rework or additional coordination/engineering, all expenses shall be reimbursed to AMS. In addition, a \$1,500 per hour back charge will occur if a delay due to grinding, leveling, etc... is required at time of installation.**

District must provide an ALL WEATHER truck accessible level/compacted prepared pad. The pad shall be a maximum of 6" from grade level measured diagonally along long axis. All sites exceeding 6" shall be charged on a site-by-site basis.

Concrete Foundation Exclusions – site demolition, foundation pad excavation, import/export soils, surveying, site improvements, underground hazards, crawl space drainage, dry wells, slurry seal, backfilling/compaction, unforeseen conditions

AMS does not have the following included in our scope as listed above per the new requirements in 2016 CBC: exterior lighting back-up battery load monitoring provisions, EMCS systems pathways and/or coordination, airport proximity STC compliance, extreme climate zone HVAC coordination and solar option design/approval. AMS provides non-operable windows as standard for all projects unless otherwise coordinated.

The omission of any item(s) not listed in the assumed scope and/or exclusions shall not be construed to be included in this pricing. All projects per AMS standard PC guidelines, manufacturing methods, finishes and fixtures. AMS does not include direction and/or design for options not included in our scope unless otherwise stated or coordinated prior.



American Modular Systems Inc.
787 Sprockels Ave. Manteca, CA 95338
(209)825-1921 Fax (209)825-7018
americanmodular.com

DRAWING TITLE

60 x 32 CLASSROOM WING

PROJECT No.

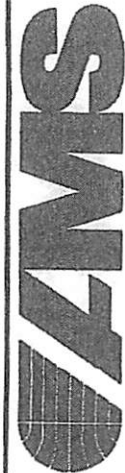
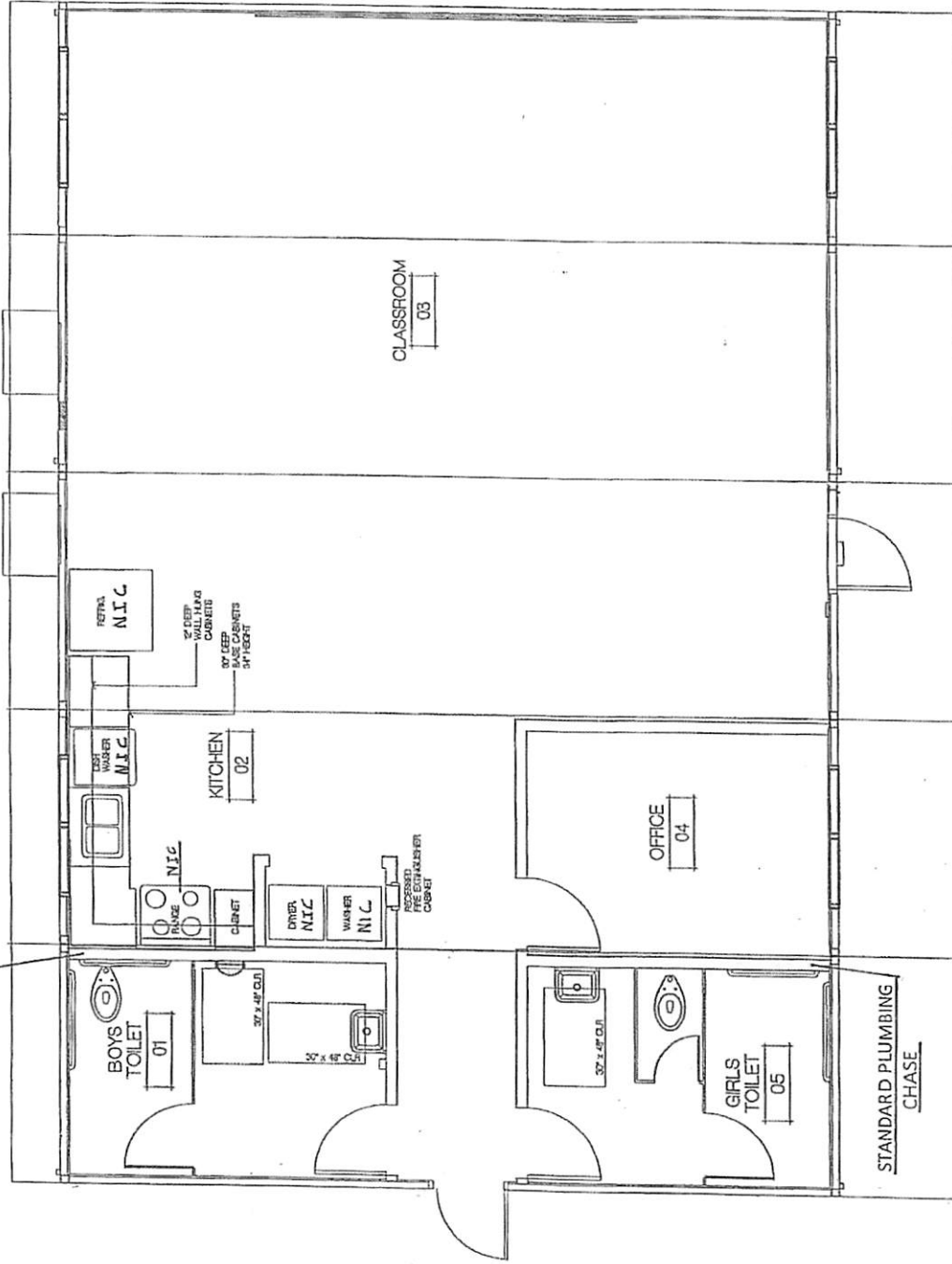
DATE: 1/2/18

SCALE: NOTED

DRAWN BY: RL

SERIAL NO.:

STANDARD PLUMBING
CHASE



American Modular Systems Inc.
787 Sprackels Ave. Manteca, CA 95336
(209)825-1821 Fax (209)825-7018
americanmodular.com

DATE: 1/2/18
SCALE: NOTED
DRAWN BY: RL
SERIAL NO.:

DRAWING TITLE
50 x 32 SPECIAL ED CLASSROOM

PROJECT No.